



TRIAL BULLETIN

www.carsk.org

CARSK

WELCOME
BIENVENUE
BENVINGUT

IN THIS ISSUE:

- KUDOS to sites who reached important milestones
- Site of the Month profile
- Recruitment Milestones
- Worldwide Enrollment
- Q&A

KUDOS!

ST. MICHAEL'S HOSPITAL

For enrolling their first
patient in May!

LONDON UNIVERSITY SCIENCE CENTRE

VANCOUVER ST. PAUL'S HOSPITAL

MCGILL UNIVERSITY HEALTH CENTRE

QUEEN ELIZABETH II HEALTH SCIENCES CENTRE

UNIVERSITY HEALTH NETWORK

For reaching their enrolment
targets in May and June!

SITE OF THE MONTH

UNIVERSITY of SASKATCHEWAN ST. PAUL'S HOSPITAL



Left to Right:
Dr. Rahul Mainra, PI,
Braedon Mandtler, RC

Many Thanks to Dr. Mainra and Braedon who have consistently reached their monthly target and demonstrated a high level of accuracy and timely reporting of events.

Dr. Mainra and Braedon have worked closely with the transplant coordinators across Saskatchewan to assist them in enrolling all eligible subjects.

"Without teamwork, we would not be able to accomplish what we have so far.

Not only does our team work closely on the CARSK Study, we also work directly with the kidney transplant patients of Saskatchewan. This includes screening pre-operatively, post-operative education, direct bedside care, as well as clinics and lifelong monitoring after discharge" - Braedon

Dr Rahul Mainra is a transplant nephrologist at St Paul's Hospital in Saskatoon, Saskatchewan. He finished his MD degree and internal medicine residency at the university of Saskatchewan, followed by a nephrology fellowship at Western university and a transplant fellowship at Westmead Hospital in Sydney, Australia.

Braedon Mandtler is a Registered Nurse at St. Paul's Hospital in Saskatoon, Saskatchewan. He works in a General/Renal medical unit, but is also trained to work with kidney transplant recipients post-operatively and during any future transplant related admissions. He completed his Bachelor of Science in Nursing from the University of Saskatchewan in 2014.

RECRUITMENT MILESTONES

PENDING

Berlin Charite - Germany
St George's Hospital - UK
University of Arizona

WORLDWIDE ENROLLMENT

There are **422**
participants enrolled
in **Canada and USA**

There are **749**
participants enrolled
in **Australia, New
Zealand and Spain**

For a TOTAL of **1171**
Patients Randomised
Globally as of June 30th

NOW RECRUITING

CANADA, USA

- 1) St Paul's Hospital, Vancouver (144)
- 2) Vancouver General Hospital (90)
- 3) University Health Network (41)
- 4) London Health Science Centre (24)
- 5) St. Joseph's Healthcare (24)
- 6) George Wash University Hospital (20)
- 7) The Ottawa Hospital (18)
- 8) University of Montreal Maisonneuve-Rosemont (13)
- 9) Queen Elizabeth II Health Sciences Centre (13)
- 10) University of Saskatchewan (10)
- 11) University of Montreal CHUM (10)
- 12) University of Laval (5)
- 13) McGill University Health Centre (5)
- 14) St Michael's Hospital (5)
- 15) Kingston General Hospital
- 16) University of Alberta

AUSTRALIA, NEW ZEALAND, SPAIN

- 1) Auckland City Hospital (197)
- 2) Westmead Hospital (167)
- 3) Royal Prince Alfred Hospital (142)
- 4) Bellvitge Hospital (46)
- 5) Royal North Shore Hospital (37)
- 6) Wellington Hospital (26)
- 7) St George Hospital (24)
- 8) Box Hill Hospital (23)
- 9) Monash Medical Centre (19)
- 10) Austin Hospital (16)
- 11) Dunedin Hospital (15)
- 12) Royal Adelaide Hospital (13)
- 13) Christchurch Hospital (10)
- 14) Prince of Wales Hospital (10)
- 15) Wollongong Hospital (4)



QUESTIONS AND ANSWERS

How should patients be followed after an unscheduled event

(cardiovascular death, myocardial infarction, emergency revascularisation, hospitalisation for unstable angina)?

- if **Patient remains on the WL**, continue to follow up as usual every 6 months.
- If **post transplant**, continue to follow up to 1 year post transplant.
- If **Patient is permanently removed from the wait list**, follow up for 12 months only for Death Event - no other events need to be recorded at this time.

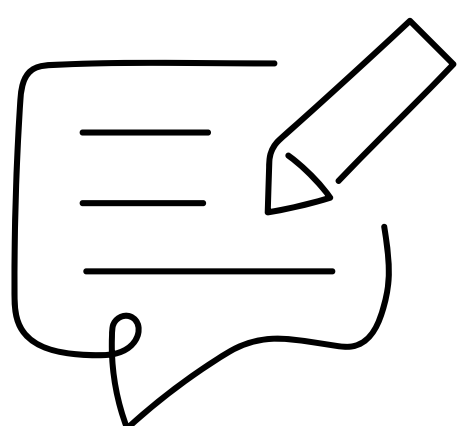
Which hospitalizations should be collected?

Patient hospitalized while on the Wait List:

- Collect all hospitalizations

Patient hospitalized Post-Transplant:

- Collect only if there was a cardiac concern during the admission



if you have any questions related to the study, please contact Angela at **AOgniben@providencehealth.bc.ca**